

**ATTACHMENT C**

**CONCEPT DESIGN/COMMUNITY  
EXHIBITION BOARDS**



# 1 Have Your Say

# On Burton and Palmer streetscape upgrade

**The City of Sydney is improving the intersection around Burton and Palmer streets, Darlinghurst to make it safer, easier to use and more appealing.**

## About the Project

East Sydney's cultural and creative hub is home to the Eternity Playhouse, the East Sydney Community and Arts Centre (formerly known as Heffron Hall), Albert Sloss Reserve and nearby public spaces including Taylor Square, Oxford Square, Oxford Street and the Bourke Street cycleway.

This project will improve the area around the Burton and Palmer street intersection, making it safer and creating a more attractive place for the community to gather.

## Key design aims

### Improving safety

The improvements include narrower traffic lanes, wider footpaths and two new raised pedestrian crossings at the Burton and Palmer Street intersection. This will provide a safe crossing for local residents and visitors to the cultural precinct.

The footpath along Palmer Street will also be extended across Kells Lane to give pedestrians right of way when crossing.

The new street layout will slow traffic, making it safer for both drivers and people walking. To accommodate these changes, five car spaces will be removed.

### New public space

Wider footpaths along Burton Street will create more space outside the Eternity Playhouse for people to meet and gather.

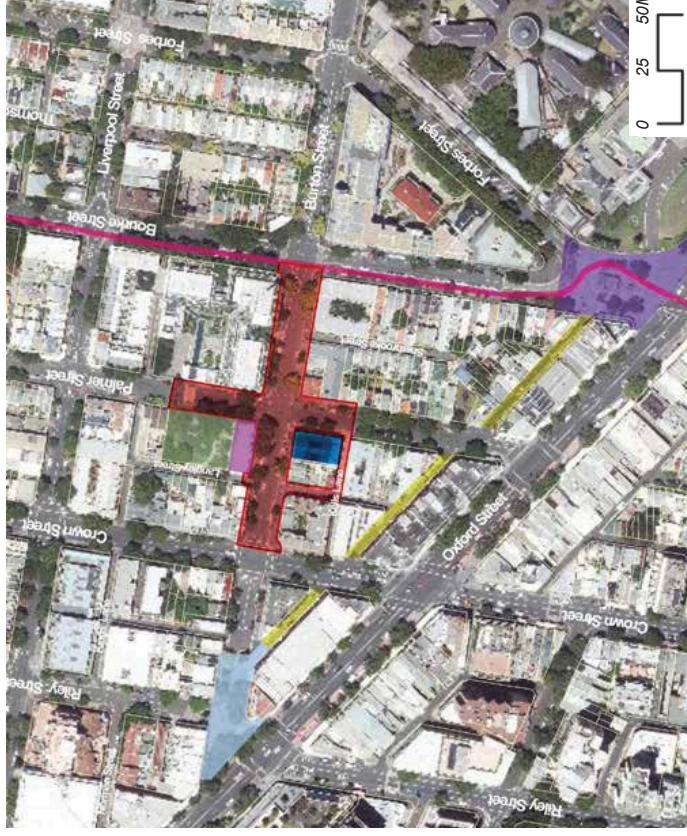
On the opposite side of the street, the Eastern Sydney Community Arts Centre (formerly known as Heffron Hall) is currently under

construction. The building is due to reopen in 2016 as a new community and cultural hub for performance, workshops and out-of-hours child care.

The improvements will better link the cultural precinct to nearby existing public squares on Oxford Street.

### Improving the street's visual appeal

The project also includes new bench seating, bike parking, improved street lighting, high quality brick paving and gardens. A canopy of new street trees will create more green space. Two new rain gardens will help address localised flooding.



1 Aerial view of the Burton and Palmer Streetscape project and nearby squares, parks and cycleways.

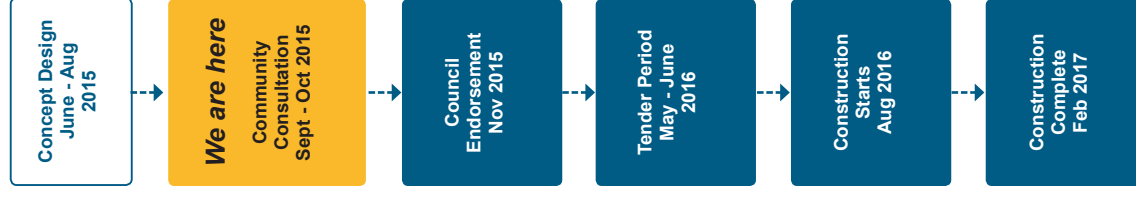
## Existing intersection



2 View looking south from Palmer and Burton Street intersection towards Eternity Playhouse.



3 View looking north from intersection of Burton and Palmer streets.



## Feedback

The concept design is on exhibition until 14 October 2015. Please provide feedback online at [sydneyyoursay.com.au](http://sydneyyoursay.com.au)

Documents can also be viewed at:

One Stop Shop (CBD)  
Level 2, Town Hall House, 456 Kent Street, Sydney NSW 2000  
Monday to Friday: 8am to 6pm

All feedback received during the public exhibition will be reported to Council.

## Contact

For more information, contact Adam Lander, Community Engagement Coordinator, on 02 9265 9333 or email [alander@cityofsydney.nsw.gov.au](mailto:alander@cityofsydney.nsw.gov.au)

Postal address:  
City of Sydney, GPO Box 1591,  
Sydney NSW 2001

Find out more at [sydneyyoursay.com.au](http://sydneyyoursay.com.au)

# 2 Concept design proposal



Sherbrooke Street 43 Burton Street 276 Palmer Street Palmer Street Eternity Playhouse 39 Burton Street 33 - 37 Burton Street Langley Street 254 Crown Street Crown Street

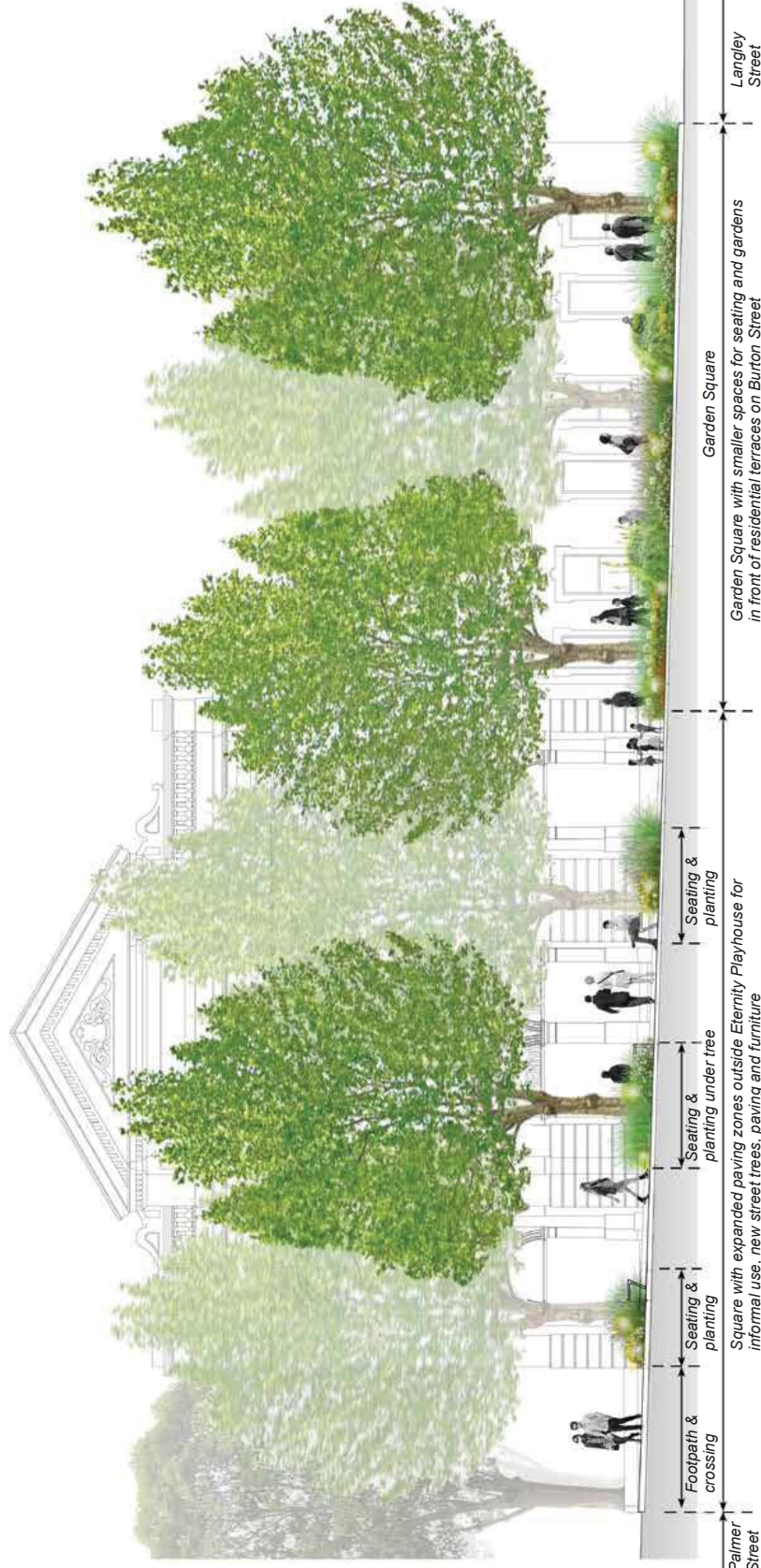
## 1 Existing Street Condition - Burton Street Southside frontages



2 Burton Street footpath is 3 metres wide and in need of repair.



3 There is an opportunity to add new garden beds along Burton Street.



Palmer Street  
 Footpath & crossing  
 Seating & planting  
 Square with expanded paving zones outside Eternity Playhouse for informal use, new street trees, paving and furniture  
 Seating & planting under tree  
 Seating & planting

Garden Square  
 Garden Square with smaller spaces for seating and gardens in front of residential terraces on Burton Street

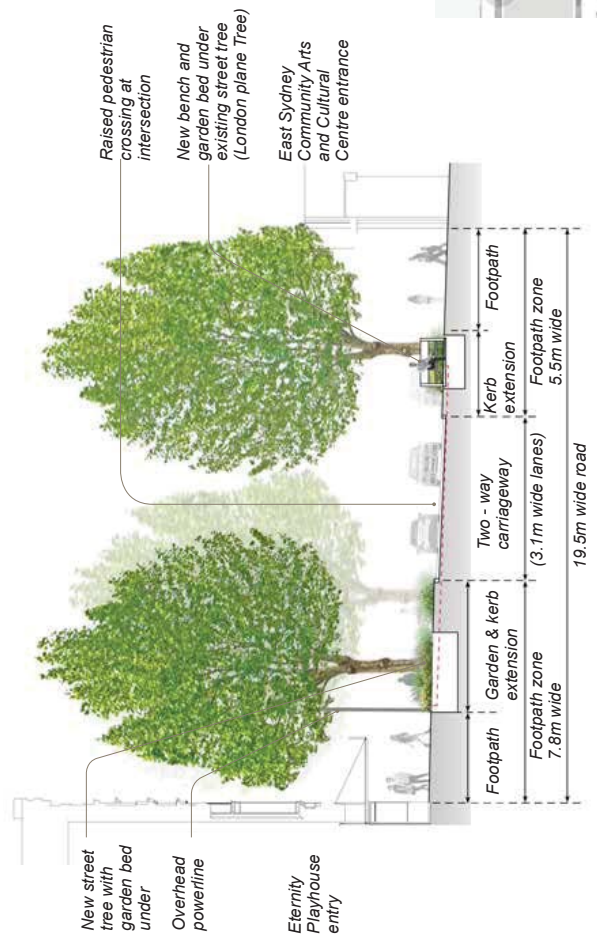
Langley Street

## 4 After - Elevation view looking towards Eternity Playhouse



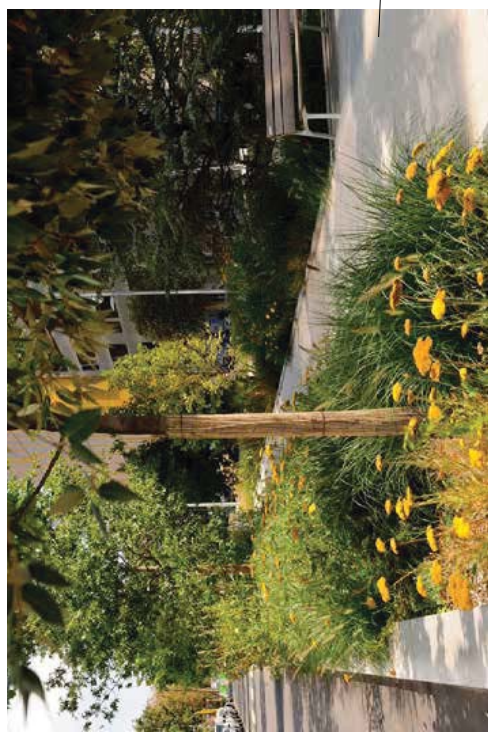
**LEGEND**

- Existing kerb removed
- New canopy tree (London plane)
- New pedestrian crossing
- Street furniture bike rack and benches
- Asphalt footpath retained
- Brick paving laid in herringbone pattern
- Existing tree to be retained
- New garden beds
- Car share and parking spaces retained
- New garden beds under existing street trees
- Asphalt footpath retained



Section AA Eternity Playhouse through pedestrian crossing  
1: 200 at A3

Design character images



New trees and garden beds to provide colour, texture and bring new life into the street.



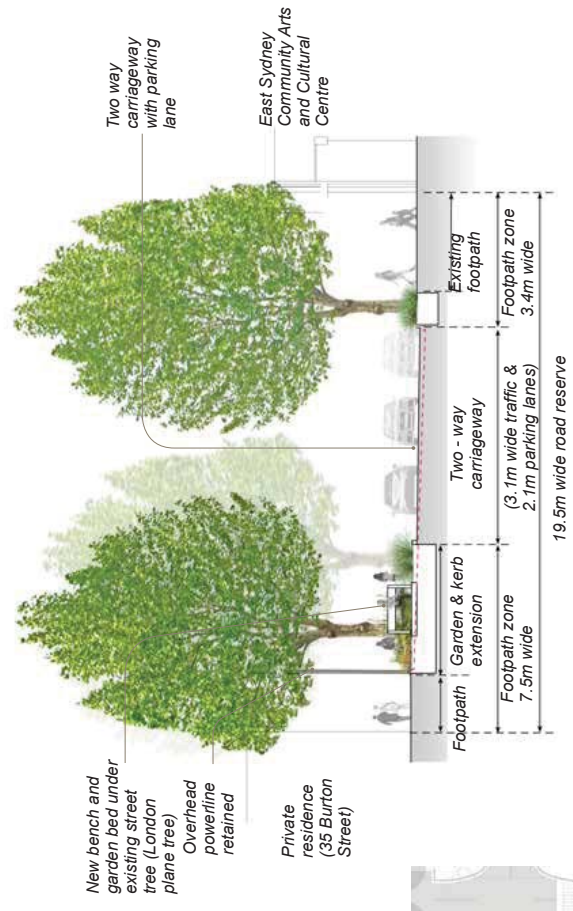
Planting and seating areas under deciduous trees.



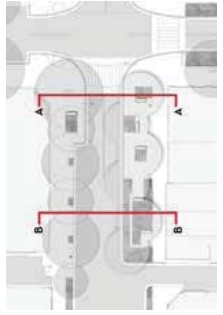
Kerb extensions to enable wider footpaths with seating, canopy shade trees in new street square.



Example of a raised pedestrian crossing with clear linemarking, Crown Street, Surry Hills.



Section BB - Residences through Burton Street  
1: 200 at A3



Section Key Plan

## Coordination with nearby projects

The East Sydney Community and Arts Centre, formerly Heffron Hall and the Albert Sloss Reserve are being renewed and will be completed in mid 2016.

The centre includes multipurpose spaces for hire and improved out-of-hours school care facilities for up to 30 children. It will be more accessible and better connected to Albert Sloss Reserve and Palmer Street. The park upgrade includes new play equipment, paths, lighting and more grass areas.

Construction will be carefully staged to avoid delays between the two projects and to minimise disturbance.

## Materials, Furniture and Rain Gardens

### Furniture

In line with the City Streets Code 2013, new furniture will include bench seats with backrests, bicycle racks and new street and public domain lighting.

### Paving

High quality brick paving laid in a herringbone pattern is proposed will tie in with the design chosen for the East Sydney Community and Arts Centre.

### Raingardens

New raingardens on Palmer Street will help reduce localised flooding issues.



Artist impression - East Sydney Community and Arts Centre entry at the corner of Burton and Palmer streets



Artist impression - View looking north east from Langley Street through Albert Sloss Reserve



Pedestrian areas  
Herringbone brick paving



City of Sydney village bench  
Bronze powdercoated steel frame with recycled plastic composite seat



City of Sydney  
Standard bike rack



Garden beds under street trees



Reingardens installed under existing trees

## Planting

Two trees will be removed due to poor condition. To provide shade in summer and sun in winter, six new deciduous Plane trees will be planted.

The trees will be surrounded with flowering species to provide colour throughout the year and bring new life into the street.

To green the street, new gardens will also be created in front of residential buildings and garden beds under existing trees between Langley and Crown streets.



London Plane Tree  
(*Platanus x acerifolia*)



Fine leaved Mat rush  
(*Lomandra longifolia* 'tanika')



Narrow-leaf bower  
Wattle (*Acacia cognata*)



Treasure flower  
(*Gazania rigens*)



Torch lily  
(*Kniphofia uvaria*)



Swamp foxtail grass  
(*Pennisetum hairy*)



Coneflower  
(*Rudbeckia laciniata herbisforme*)



Everlasting daisy  
(*Xerochrysum bracteatum*)



Mat rush  
(*Lomandra filiformis savannah blue*)